



# MONTHLY MEMBERSHIP PROGRESS REPORT

District A 3

Results as of: 09/30/2018

GMT: CHRIS LEWIS

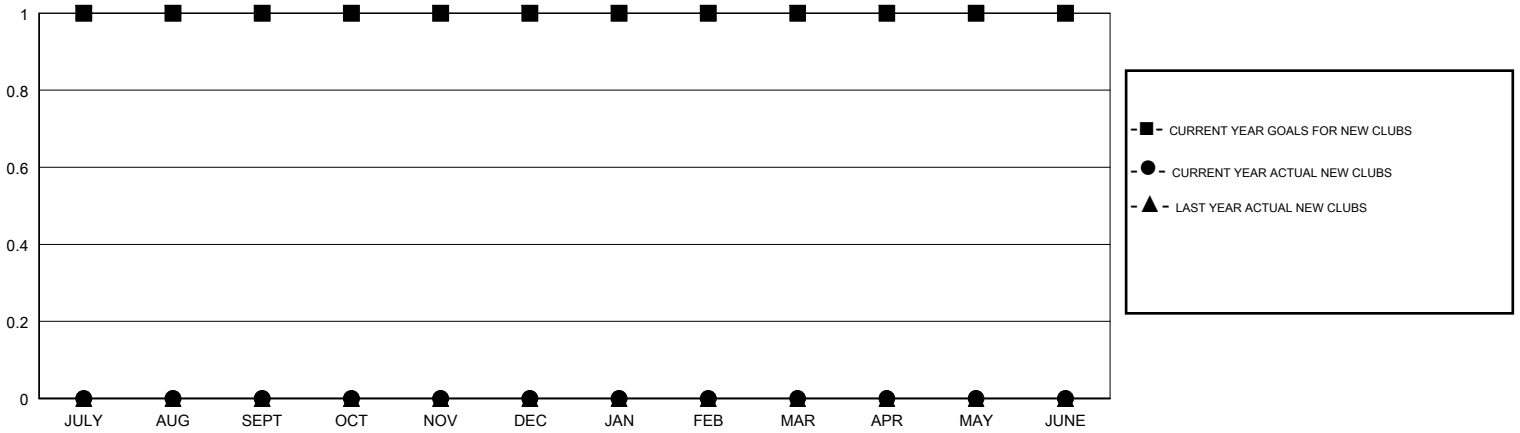
LOCATION ONTARIO

GMT CA

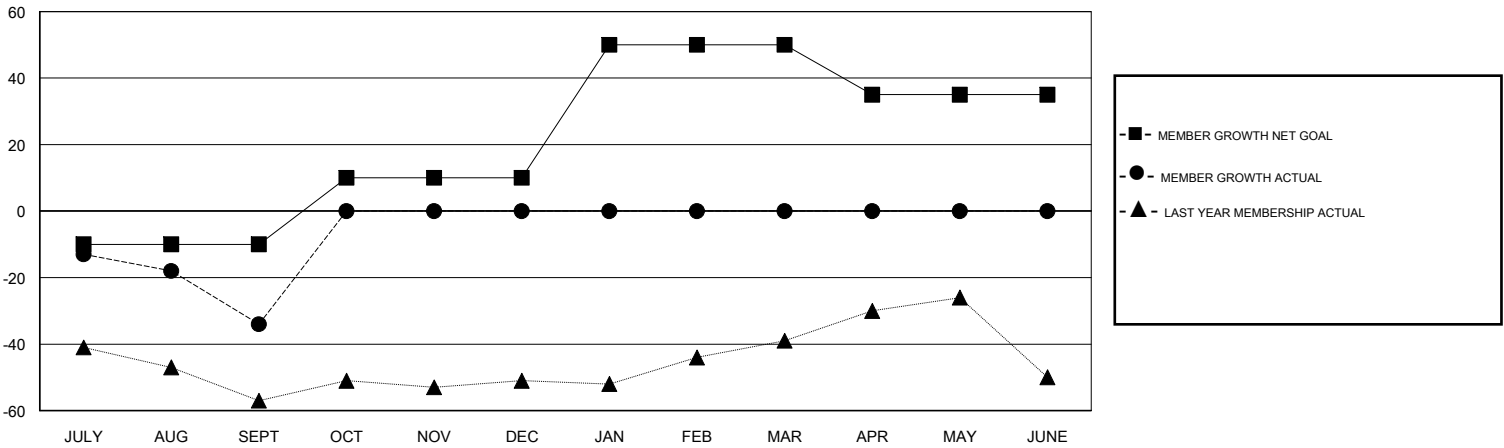
Clubs			
RESULTS FOR 2018-2019			
QUARTER	NEW CLUB GOAL	NEW CLUBS	DROPPED CLUBS
JULY/AUG/SEPT	1	0	0
OCT/NOV/DEC	0	0	0
JAN/FEB/MAR	0	0	0
APR/MAY/JUNE	0	0	0

Members			
RESULTS FOR 2018-2019			
QUARTER	MEMBER GROWTH NET GOAL	MEMBER GROWTH ACTUAL	DROPPED MEMBERS ACTUAL (including transfers)
JULY/AUG/SEPT	-10	14	42
OCT/NOV/DEC	20	0	0
JAN/FEB/MAR	40	0	0
APR/MAY/JUNE	-15	0	0

GOALS AND ACTUAL NEW CLUBS CUMULATIVE



GOALS AND ACTUAL MEMBERS CUMULATIVE



DROPPED CLUBS: 0	6 CLUBS OF 50 ADDED 1 OR MORE NEW MEMBERS	<b>GENDER DISTRIBUTION</b>
DROPPED MEMBERS	<a href="#">CLICK HERE FOR CUMULATIVE MEMBERSHIP DATA</a>	MALE 784 (62.17%)
DECEASED 4		FEMALE 477 (37.83%)
CLUB CANCELLED 0		Women Percentage Fiscal Year Goal: 4%
OTHER 38		TOTAL FAMILY UNIT MEMBERS 340
TOTAL 42		FAMILY MEMBERS PAYING HALF DUES 176